



RETAIL SALES ROSE 7.1 PER CENT

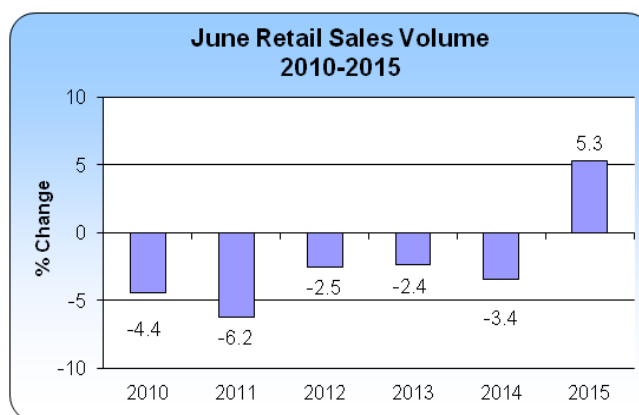
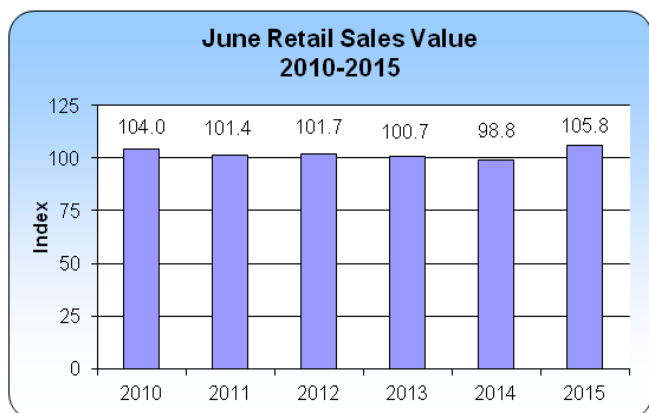
The total retail sales index was 7.1 per cent higher than the level reached in June 2014. All retail sectors recorded growth in sales with motor vehicle retailers registering the largest increase of 36.7 per cent.

Returning residents declared overseas purchases valued at \$4.3 million, the same as in June 2014.

This contributed to a combined local and overseas spending of \$99.0 million.

After adjusting for the annual retail sales rate of inflation, measured at 1.7 per cent in June, the volume of retail sales increased 5.3 per cent.

Excluding Sundays, there were 25 shopping days during the month, one day more than June 2014.



The RSI is currently based on a matched sample of reporting retail stores. The sales data are collected from these stores through a monthly mail survey. The Department of Statistics wishes to acknowledge the continuous support of the business community in supplying the required sales da-

SUMMARY STATISTICS

Period	Total Retail Sales Index* (R)	Annual % Change in Retail Sales		Total Retail Sales Estimate (\$M) (R)	Overseas Purchases Declared by Returning Residents		Combined Retail Sales (Local + Overseas)	
		Value (R)	Volume (R)		Value (\$M)	% Change	Value (\$M) (R)	% Change (R)
2014								
Jun	98.8	-1.8	-3.4	88.5	4.3	-4.4	92.8	-2.0
Jul	107.2	-3.2	-4.9	96.0	4.5	0.0	100.4	-3.1
Aug	91.9	+0.3	-1.5	82.3	6.6	+1.5	88.7	+0.4
Sep	92.1	+4.7	+2.1	82.5	4.4	-10.2	86.9	+3.8
Oct	95.7	+4.6	+2.2	85.7	4.3	+4.9	90.0	+4.6
Nov	97.1	+1.4	-0.8	87.0	6.0	-1.6	93.0	+1.2
Dec	120.8	+6.9	+5.8	108.1	7.5	0.0	115.6	+6.4
2015								
Jan	86.5	+2.9	+2.2	77.4	4.4	+4.8	81.8	+3.0
Feb	81.5	+3.0	+2.7	73.0	3.0	0.0	76.0	+2.9
Mar	94.4	+2.5	+2.7	84.5	3.7	+5.7	88.2	+2.6
Apr	99.6	+4.2	+3.7	89.2	5.0	+2.0	94.2	+4.1
May	99.7	+1.6	+0.1	89.3	5.6	+12.0	94.9	+2.2
Jun	105.8	+7.1	+5.3	94.7	4.3	0.0	99.0	+6.7

Motor Vehicle Stores

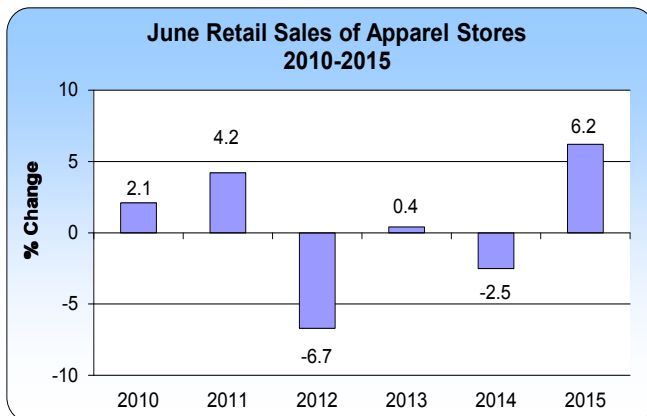
Retail sales of motor vehicles jumped 36.7 per cent year-over-year. The increase in sales was due to a 39.1 per cent rise in the number of vehicles sold during the month.

Building Material Stores

Gross receipts of building material stores strengthened 12.6 per cent, marking the tenth consecutive month of higher sales levels. The increase in sales was linked to residential projects. When adjusted for inflation, the sales volume increased 11.3 per cent.

Apparel Stores

Sales revenue for apparel stores increased 6.2 per cent due partly to a higher consumer demand for sales items. In volume terms, sales of apparel increased 8.0 per cent.



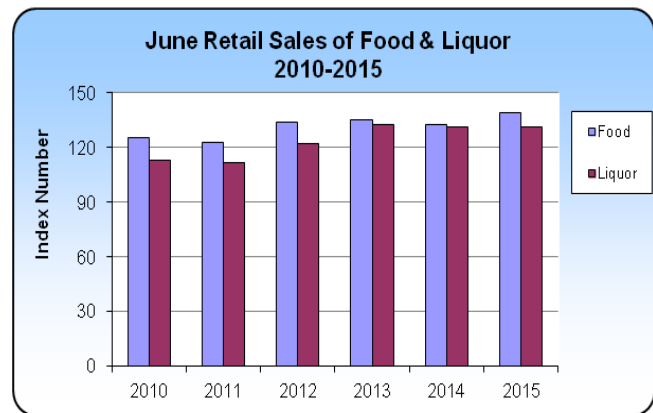
All Other Store Types

Sales receipts for the all other store types sector was 5.6 per cent higher year-over-year. Gross receipts earned by boat and marine suppliers doubled when compared to June 2014. Sales at pharmacies rose 5.0 per cent, while sales of furniture, appliances and electronics increased 0.5 per cent. Gross receipts of tourist-related

stores remained relatively unchanged with a fractional increase of 0.1 per cent. After adjusting for inflation, the sales volume for the all other store types category increased 5.4 per cent.

Food and Liquor Stores

Receipts from food sales advanced 5.1 per cent while sales revenue for liquor stores recorded a marginal increase of 0.1 per cent during the month. Volume sales for food stores increased 1.2 per cent. In contrast, liquor store volume sales slipped 0.7 per cent.



Service Stations

Sales receipts for service stations were relatively flat, with a fractional increase of 0.1 per cent. The 3.6 per cent increase in the volume of sales was offset by the 3.5 per cent drop in the price of fuel.

Resident Purchases Overseas

Returning residents declared overseas purchases of goods valued at \$4.3 million in June 2015. The same level of spending was estimated in June 2014.

BERMUDA RETAIL SALES INDEX

Average Monthly Sales Value (1)

2006=100

Period	Total Retail Stores (R)		Food Stores (2)		Liquor Stores (3)		Motor Vehicle Stores		Service Stations		Building Material Stores (R)		Apparel Stores		All Other Store Types	
2014																
Jun	98.8	-1.8	132.3 ^R	-2.3	131.2 ^R	-0.8	51.2	+32.0	117.7 ^R	-4.3	38.8	-16.9	102.1	-2.5	95.2 ^R	-3.4
Jul	107.2	-3.2	152.8	-1.7	165.1	-0.6	57.6	-2.5	119.7	-3.3	43.2	-29.5	85.3	+1.8	104.1	-1.9
Aug	91.9	+0.3	129.6	+3.6	152.2	+0.5	45.0	+12.2	113.4	-3.1	41.3	-7.8	78.5	-3.0	83.7	-3.5
Sep	92.1	+4.7	126.4	+1.9	139.6	+8.6	57.6	+19.3	112.9	+2.9	47.4	+15.6	77.8	+1.2	82.4	+5.1
Oct	95.7	+4.6	142.5	+8.2	126.2	+16.3	55.8	-6.5	122.9	+10.2	46.1	+2.4	59.9 ^R	-19.7	85.6	+7.7
Nov	97.1	+1.4	130.3	+2.5	138.6	+3.4	51.3	+11.3	104.0	-4.0	47.6	+2.8	100.9	+3.9	91.3	-2.8
Dec	120.8	+6.9	149.9	+4.2	171.4	+6.8	57.8	+59.2	100.5	-6.5	47.7	+34.0	164.2	+3.9	124.9	+4.6
2015																
Jan	86.5	+2.9	131.0	+5.8	111.9	+3.9	53.5	-5.3	90.9	-12.4	46.0	+16.8	55.4	+1.7	75.6	+2.2
Feb	81.5	+3.0	119.8	+3.9	109.5	-0.1	62.0	+18.1	84.5	-13.3	45.5	+15.5	48.6	+3.4	70.8	-1.0
Mar	94.4	+2.5	131.2	+1.1	123.4	-4.0	68.9	+26.4	105.7	-7.1	54.7	+18.1	59.6	+0.4	81.1	-0.5
Apr	99.6	+4.2	137.1	+2.9	133.1	-6.2	88.0	+51.5	105.5	-6.8	50.7	+2.8	72.0	-7.1	87.4	+2.2
May	99.7	+1.6	141.3	+5.3	120.1	-0.5	58.2	-5.4	114.3 ^R	-5.2	54.5	+13.5	97.7	+3.0	93.1	-2.7
Jun	105.8	+7.1	139.1	+5.1	131.3	+0.1	70.0	+36.7	117.6	+0.1	43.7	+12.6	108.4	+6.2	100.5	+5.6

Average Monthly Sales Volume (1)

2006=100

Period	Total Retail Stores (R)		Food Stores (2)		Liquor Stores (3)		Motor Vehicle Stores		Service Stations		Building Material Stores (R)		Apparel Stores		All Other Store Types	
2014																
Jun	79.0	-3.4	96.1 ^R	-5.3	100.1 ^R	-2.4	46.8	+32.5	89.2 ^R	-5.3	30.2	-17.9	80.8	-4.4	81.3 ^R	-5.5
Jul	85.4	-4.9	110.0	-5.2	125.9	-2.1	52.7	-1.9	91.1	-3.1	33.7	-30.2	67.3	-0.2	88.8	-3.9
Aug	73.2	-1.5	92.7	+0.4	116.1	-0.8	41.1	+12.7	88.3	-2.0	32.2	-8.8	62.0	-4.8	71.4	-5.4
Sep	72.6	+2.1	90.2	-1.3	106.5	+6.9	52.6	+19.8	87.8	+1.1	37.0	-14.6	63.4	+2.4	70.2	+2.8
Oct	75.8	+2.2	101.4	+4.5	96.2	+14.4	51.0	-6.0	98.7	+13.1	35.9	+1.1	48.6 ^R	-18.4	72.8	+5.3
Nov	77.2	-0.8	92.7	-1.6	105.6	+2.2	47.4	+12.7	87.2	-1.1	37.1	+1.6	81.8	+6.1	77.5	-5.0
Dec	97.3	+5.8	107.9	+0.1	130.6	+5.6	53.4	+61.1	92.4	+7.1	37.2	+32.4	133.0	+6.2	106.0	+2.3
2015																
Jan	69.4	+2.2	92.6	+2.0	84.9	+3.0	49.3	-5.0	83.8	+2.8	35.9	+15.4	44.8	+4.5	64.2	+0.2
Feb	65.3	+2.7	84.4	+0.3	83.1	-1.1	57.2	+18.8	77.7	+4.0	35.3	+15.0	39.3	+6.2	60.5	-2.0
Mar	75.5	+2.7	92.0	-1.6	93.6	-4.9	63.8	+27.4	94.9	+8.8	42.5	+17.7	48.2	+3.0	69.3	-1.4
Apr	79.1	+3.7	96.2	-0.2	100.8	-7.1	81.5	+52.7	92.2	+7.2	39.4	+2.6	58.0	-5.5	74.6	+1.6
May	78.9	+0.1	98.5	+1.2	90.9	-1.4	53.9	-4.6	95.7 ^R	+3.5	41.9	+12.0	78.7	+4.7	79.6	-2.9
Jun	83.2	+5.3	97.2	+1.2	99.4	-0.7	65.1	+39.1	92.4	+3.6	33.6	+11.3	87.3	+8.0	85.7	+5.4

(1) Index numbers are subject to revisions

*The yearly series reflect annual changes

(2) Includes household supplies but excludes alcoholic beverages

(3) Does not include sales to bars, clubs, hotels and restaurants

(R) represents revised

EXPLANATORY NOTES

The **Retail Sales Index (RSI)** was first developed in 1982. It is a key economic indicator used to assess the current performance of sales activity in the retail sector of the economy.

The RSI is a self-weighting index. This means that stores reporting a large value of sales have a greater impact on the movement of the index than stores reporting a low level of sales activity.

The RSI serves to:

- 1) measure monthly and annual movements of retail sales
- 2) provide an estimated gross turnover of sales in the local retail sector
- 3) act as a barometer of change in the level of demand for both the domestic and tourist markets

The index is structured into seven broad sectors:

- Food Stores
- Liquor Stores
- Motor Vehicle Dealers
- Service Stations
- Building Materials
- Apparel Stores
- All Other Store Types

Total retail stores across the seven sectors represent roughly 70% of all retail activity on the Island. The base period 2006 recorded a gross turnover in retail sales of \$1.1 billion.

Retail outlets that participate in the retail sales survey and trade in similar types of goods are grouped into these seven sectors. It is important to note that sector classifications are not interchangeable with commodity classifications. This is because most retail outlets sell several kinds of commodities. The sector classification generally reflects the individual commodity or the commodity group, which is the primary source of the establishment's receipts, or some mixture of commodities, which characterizes the establishment's business.

CONCEPTS AND DEFINITIONS

Retail Trade

Retail trade is the sector of the economy that includes establishments that are engaged in the sale of mer-

chandise for personal or household consumption and in the rendering of services that are incidental to the sale of the merchandise.

Retail Establishment

A retail establishment is one that operates at a fixed place of business and is engaged in sales activities to attract the general public to buy merchandise.

Value Sales

The dollar value of a quantity of goods and services sold for cash or credit. Sales include the amounts received from customers for: immediate and layaway purchases; rentals; installations; maintenance; repairs and alterations.

Gross Sales

Gross sales are sales for which no deductions have been made for the return of merchandise, allowances and discounts.

Volume Sales

The dollar value of a quantity of goods and services sold at current retail market prices adjusted to eliminate the effect of price change.

Estimated Gross Turnover

Estimated gross turnover is the total value of retail sales generated in the retail sector. It is calculated by applying the all-items index number for the current month to the average monthly sales figure determined in the base year.

Base Period

This is the time period used as a reference point for measuring the shift in the value of retail sales. The base period for the Bermuda RSI is 2006.

Published by the Government of Bermuda
August 2015

The Cabinet Office
Department of Statistics
Cedar Park Centre,
48 Cedar Avenue, Hamilton HM 11
P.O. Box HM 3015
Hamilton HM MX, Bermuda
Tel: (441) 297-7761, Fax: (441) 295-8390
E-mail: statistics@gov.bm